

Unveiling the Enigma of Diabetes: A Comprehensive Guide to Epidemiology, Pathophysiology, and Clinical Management



Diabetes, a prevalent chronic condition, has emerged as a global health concern, affecting millions worldwide. This article delves into the

comprehensive book "Diabetes Epidemiology Pathophysiology and Clinical Management," which serves as an invaluable resource for healthcare professionals and individuals seeking a comprehensive understanding of this multifaceted disease.



Diabetes: Epidemiology, Pathophysiology and Clinical Management by Ivan Kuznietsov

★ ★ ★ ★ ☆ 4 out of 5

Language : English
File size : 2068 KB
Text-to-Speech : Enabled
Screen Reader : Supported
Enhanced typesetting : Enabled
Print length : 221 pages



Epidemiology: Uncovering the Scope and Impact

The book opens with an extensive analysis of diabetes epidemiology, providing an in-depth understanding of its prevalence, incidence, and global distribution. It examines the factors influencing the development of type 1 and type 2 diabetes, including genetic susceptibility, environmental triggers, and lifestyle choices. Detailed statistics and epidemiological studies shed light on the disease's impact on different populations, age groups, and geographic regions.

Pathophysiology: Unveiling the Underlying Mechanisms

The book delves into the intricate pathophysiology of diabetes, elucidating the molecular and cellular processes that give rise to the disease. It explores the role of insulin resistance and impaired insulin secretion in the

development of type 2 diabetes and examines the autoimmune-mediated destruction of pancreatic beta cells in type 1 diabetes. The volume also investigates the metabolic abnormalities associated with diabetes, such as hyperglycemia, dyslipidemia, and insulin resistance, and their downstream effects on the cardiovascular system, kidneys, and other organs.

Clinical Management: A Comprehensive Approach

The book provides a comprehensive overview of clinical management strategies for diabetes, covering both pharmacological and non-pharmacological interventions. It discusses the principles of insulin therapy, oral antihyperglycemic medications, and newer therapeutic approaches such as incretin-based therapies and sodium-glucose cotransporter-2 inhibitors. Lifestyle modifications, including dietary interventions, exercise, and smoking cessation, are highlighted as essential components of diabetes management. The volume also addresses the importance of patient education, self-management, and the role of healthcare providers in optimizing outcomes.

Complications and Management

The book explores the various complications associated with diabetes, including cardiovascular disease, retinopathy, nephropathy, neuropathy, and foot ulcers. It provides detailed guidance on the diagnosis and management of these complications, emphasizing the importance of early detection and preventive measures. The volume also discusses the role of specialized healthcare professionals, such as endocrinologists, ophthalmologists, nephrologists, and podiatrists, in managing the complexities of diabetes.

Special Populations and Considerations

"Diabetes Epidemiology Pathophysiology and Clinical Management" recognizes the unique challenges faced by various populations with diabetes. It examines the management of diabetes during pregnancy, in children and adolescents, and in the elderly. The book also explores the cultural and socioeconomic factors that influence diabetes care and provides guidance on tailoring management strategies to meet the needs of diverse patient populations.

Evidence-Based Practice and Research

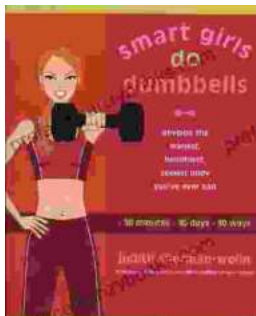
The book is grounded in evidence-based medicine and incorporates the latest scientific research and clinical trials. It provides a critical analysis of the available evidence and offers practical recommendations based on the best available data. The volume also emphasizes the importance of ongoing research and the need for continued innovation in diabetes management.

"Diabetes Epidemiology Pathophysiology and Clinical Management" is an indispensable resource for healthcare professionals and individuals seeking a comprehensive understanding of diabetes. It provides a detailed analysis of the epidemiology, pathophysiology, and clinical management of this complex disease, empowering readers with the knowledge and tools to effectively diagnose, treat, and prevent diabetes and its associated complications. By embracing an evidence-based approach and recognizing the unique challenges faced by diverse patient populations, this book serves as a valuable guide for optimizing outcomes and improving the quality of life for individuals living with diabetes.

Diabetes: Epidemiology, Pathophysiology and Clinical Management by Ivan Kuznietsov

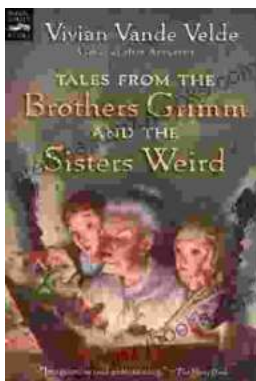


★★★★☆ 4 out of 5
Language : English
File size : 2068 KB
Text-to-Speech : Enabled
Screen Reader : Supported
Enhanced typesetting : Enabled
Print length : 221 pages



Unleash Your Inner Adonis: The Ultimate Guide to Sculpting the Leanest, Healthiest, Sexiest Body in Just 30 Minutes

Are you ready to embark on a fitness journey that will revolutionize your physique and ignite your inner Adonis? Look no further than this...



Journey into Enchanting Tales: Tales From The Brothers Grimm And The Sisters Weird Magic Carpet Books

Discover a Literary Legacy Step into a realm where imagination knows no bounds, where fairy tales dance off the pages, and magic weaves its spell....